



FREEDOM OF EXPRESSION

As unique as you are, the Street is perfect for those living in an urban environment. The Street has a top speed of 7.5 mph making it easy to zip through the city. Designed to flexibly handle narrow and awkward spaces, the 4-wheel adjustable independent suspension system provides a smooth, comfortable ride. The suspension is also visible, giving the Street a stylish and powerful look. Plus, the centre of gravity tilt system with recline keeps you balanced over your centre of gravity for a new level of confidence. With standard rear-wheel drive, the Street distinguishes you from the crowd.

Street
CORPUS

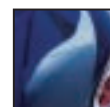
POWER FUNCTIONS



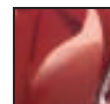
* Shown with custom painted frame

Elektrische kantel- en rugverstelling

FRAME COLORS



Blue metallic



Brown metallic



Black gold fiber



Black silver fiber



R-Net-elektronica met ICS



Power adjustable tilt



Power seat height adjustment



Power adjustable recline

ISO 7176-19 / ISO 10542-3
EN12182/EN12184



SPECIFICATIONS

Length	118 cm	Legrest angle - adjustable	100° - 180°
Width	63 cm	Battery capacity	2 x 73 AH
Min. transport length	87,5 cm	Range	25 - 35 km
Seat height	56 cm	Max. speed	12 km/hr
Seat height with electric seat lift	56 - 81 cm	Turning radius (ISO 7176-5)	90 cm
Weight incl. batteries	155 kg	Obstacle capability	7 cm
Max. user weight	120 kg	Suspension	Yes
Seat width	43/48 cm	Electronics	R-Net
Seat depth	36/41/46/51/56 cm	Electric seat lift	Yes
Backrest width	34/39/44 cm	Electric tilt adjustment	Yes
Backrest height	53,5 - 60,5 cm	Electric legrest adjustment	Yes
Distance between armrests	35/40/45 cm	Electric backrest adjustment	Yes
Backrest angle - adjustable	90° - 135°	Warranty	1 Year



The Power of Mobility

Permobil Ltd.
Oceanic, Ground Floor
Navigation Business Park
Waters Meeting Road
Bolton, BL1 8SW
info@permobil.co.uk

www.permobil.com