



SPRING-LOADED PINS

Two fixed pins attach to the Permlock C3 base to allow for a safe and secure ride. When an obstacle is encountered, they push up into the chassis.



LOCKING PLATE

Easy-to-install docking station that holds the chair firmly and securely in position.



ADJUSTABLE BASE

The height of the base can be adjusted in 5mm increments, and the angle adjustment utilizes a spring to help with mounting it on a slope.



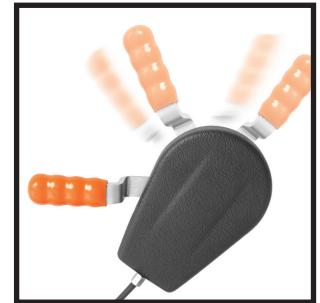
VEHICLE CONTROL BUTTON

Located on the dash, it uses three lights—red, amber and green—to indicate if the chair is locked into place. Simply press and hold to unlock the wheelchair.



EMERGENCY RELEASE

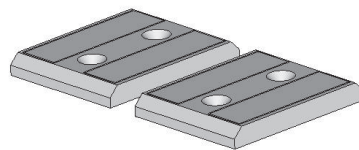
Locking mechanism can be opened manually with the emergency handle on the front edge of the locking plate.



MANUAL RELEASE

Wheelchair can be released manually in the event of vehicle power failure.

ACCESSORIES



INSTALLATION SPACER

Used for installing Permlock on a sloping surface.



THE POWER OF MOBILITY

Permobil Inc.
6961 Eastgate Boulevard
Lebanon, Tennessee 37090
800.736.0925
www.permobil.com